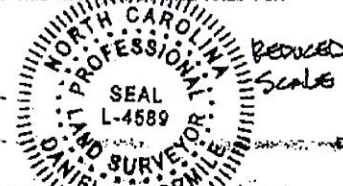


I, DANIEL S. NORMILE, PROFESSIONAL LAND SURVEYOR, CERTIFY THAT THIS IS A COMPOSITE MAP ONLY WITH DATA BEING TAKEN FROM SOURCES AS NOTED HEREON AND NOT FROM AN ACTUAL SURVEY; THAT THIS MAP IS NOT IN COMPLIANCE WITH SECTION 1600 OF THE BOARD RULES AND G.S. 47-30 AS AMENDED; AND THAT THIS MAP WAS PREPARED FOR RECORDING.

D.S.N.
 DANIEL S. NORMILE, P.L.S., L-4589



THIS CERTIFIES THAT THIS COPY OF THIS PLAN ACCURATELY DEPICTS THE BOUNDARY OF THE JURISDICTION OF SECTION 404 OF THE CLEAN WATER ACT DETERMINED BY THE UNDERSIGNED ON THIS DATE. UNLESS THERE IS A CHANGE IN THE LAW OR OUR PUBLISHED REGULATIONS, THE DETERMINATION OF SECTION 404 JURISDICTION MAY BE RELIED UPON FOR A PERIOD NOT TO EXCEED FIVE (5) YEARS FROM THIS DATE. THE UNDERSIGNED COMPLETED THIS DETERMINATION UTILIZING THE APPROPRIATE REGIONAL SUPPLEMENT TO THE 1987 U.S. ARMY CORPS OF ENGINEERS WETLANDS DELINEATION MANUAL.

REGULATORY OFFICIAL *John A. Policastro*
 (TITLE) John A. Policastro
 (DATE) May 3, 2016
 USACE ACTION ID NO. SAV-2015-02671

NOTES:

- 1) BEARINGS & DISTANCES ALONG WETLANDS LINES WERE TAKEN FROM ACTUAL FIELD LOCATION SURVEY.
- 2) THE BOUNDARY AS SHOWN HEREON IS FROM A DEED PLOTS AND ACTUAL FIELD LOCATION.

LEGEND:

- EIP = EXISTING IRON PIPE
- EIS = EXISTING IRON STAKE
- EPK = EXISTING P.K. NAIL
- ERR = EXISTING RAILROAD SPIKE
- ECM = EXISTING CONCRETE MONUMENT
- EMN = EXISTING MAG NAIL
- IPS = IRON PIPE SET
- ISS = IRON STAKE SET
- MNS = MAG NAIL SET
- SSS = SURVEY SPIKE SET
- CMS = CONCRETE MONUMENT SET
- AG = TOP ABOVE GROUND SURFACE
- BG = TOP BELOW GROUND SURFACE
- R/W = RIGHT-OF-WAY
- C = CENTERLINE
- P = PROPERTY LINE
- NOGS = NORTH CAROLINA GEODETIC SURVEY
- = OVERHEAD UTILITY LINE
- = UTILITY POLE
- = WATER METER
- = WELL
- ⊕ = FIRE HYDRANT
- ⊙ = SECURITY LIGHT
- ⊞ = CABLE BOX
- ⊟ = CLEAN OUT
- ⊠ = CURB INLET
- ⊡ = ELECTRIC BOX
- ⊢ = MONITORING WELL
- ⊣ = MANHOLE
- ⊤ = FIBER OPTIC PADDLE
- ⊥ = SIGN
- ⊦ = TELEPHONE BOX
- ⊧ = WATER VALVE
- = STORM DRAIN LINE
- = SANITARY SEWER LINE

NOTES:

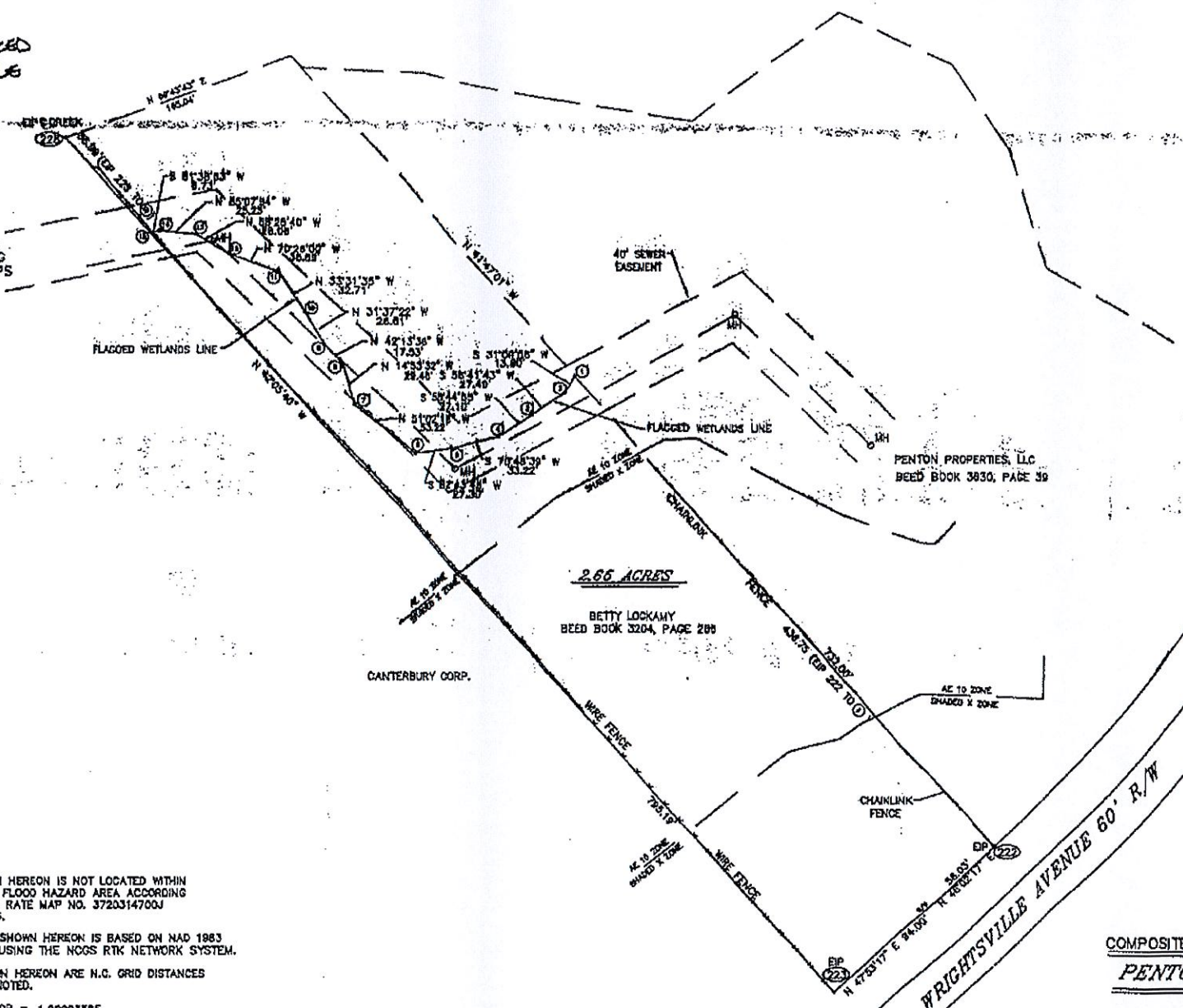
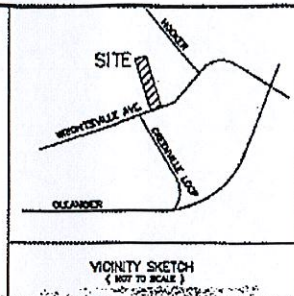
- 1) THE PROPERTY SHOWN HEREON IS NOT LOCATED WITHIN A SPECIAL 100 YEAR FLOOD HAZARD AREA ACCORDING TO FLOOD INSURANCE RATE MAP NO. 3720314700J DATED APRIL 3, 2006.
- 2) ALL N.C. GRID DATA SHOWN HEREON IS BASED ON NAD 1983 2007 ADJUSTMENT USING THE NOGS RTK NETWORK SYSTEM.
- 3) ALL DISTANCES SHOWN HEREON ARE N.C. GRID DISTANCES UNLESS OTHERWISE NOTED.
- 4) COMBINED GRID FACTOR = 1.00003565
- 5) ALL UTILITY LINES SHOWN HEREON MAY HAVE EASEMENTS AND RIGHTS OF ENTRANCE AND MAINTENANCE ASSOCIATED WITH THEM.
- 6) UNDERGROUND UTILITIES MAY EXIST THAT WE WERE NOT ABLE TO FIND ABOVE GROUND INDICATORS FOR. UTILITY MARKING COMPANIES WERE NOT CALLED TO LOCATE UNDERGROUND UTILITIES. UNDERGROUND UTILITIES MAY EXIST THAT ARE NOT SHOWN.

GRID TIES AND COORDINATES:

EIP NO. 223 - NORTH = 172,495.3981
 (CONTROL CORNER) EAST = 2,348,549.0509
 EIP NO. 228 - NORTH = 163,085.4582
 (CONTROL CORNER) EAST = 2,348,015.9921
 NCCH - NORTH = 218,288.8559
 (NOGS CORS STATION) EAST = 2,339,803.9122

REFERENCES:

DEED BOOK 3204, PAGE 286



COMPOSITE MAP AND WETLANDS SURVEY FOR:
PENTON PROPERTIES, LLC

CURRENT OWNER: BETTY A. LOCKAMY
 6037 WRIGHTSVILLE AVENUE, WILMINGTON, NC 28403
 INDIVIDUAL TRACT ON WRIGHTSVILLE AVENUE
 CITY OF WILMINGTON
 WILMINGTON TOWNSHIP, NEW HANOVER COUNTY, N.C.
 DATE: NOVEMBER 2, 2015
 SCALE: 1" = 40'

JERRY J. WILLIAMS LAND SURVEYING, P.C.
 P.O. BOX 778, BOJALVILLE, N.C. 28516
 PHONE: 910-298-8272 FAX: 910-288-2310
 EMAIL: J.WILLIAMS@SURVEY.COM FIRM NO. C-2532

RECEIVED
 JUL 27 2016
 PLANNING DIVISION